

## Crosby® G-209 Screw Pin Anchor Shackle

**NEW!**  
Product



(SEE CHART ON BACK OF PAGE FOR PART #'S)

Designed for applications that require frequent removal of the shackle, the screw pin is quick and easy to remove. This design is ideal for tie down, towing, suspension, lifting, and applications that involve side-loading circumstances.

Crosby shackles are created with special attention to material selection, forging techniques, machining, and heat treatment processes to assure the properties required will be attained. All models are quenched and tempered to assure the uniformity of performance and maximize the properties of the steel. As a result, each shackle meets its rated strength and has required ductility, toughness, impact and fatigue properties essential to providing long-term performance in adverse conditions.

### Standard Features

- Meet performance requirements of Federal Specification RR-C-271D Type IVA, Grade A, Class 2, except for those provisions required of the contractor
- Meet DNV impact requirements of 42 joules at -6°F (-20°C)
- Working load limit permanently shown on every shackle
- Forged, quenched, and tempered with alloy pins
- Can be furnished proof tested with certificates to designated standards such as ABS, DNV, Lloyds, or other certification (consult factory)
- Hot dip galvanized or self colored
- Fatigue rated

## Crosby® G-2140 Bolt Type Anchor Shackle

**NEW!**  
Product



(SEE CHART ON BACK OF PAGE FOR PART #'S)

Bolt type shackles are designed for permanent or long-term installations, particularly those where the load may slide on the shackle pin, causing the pin to rotate. The bolt type design is ideal for tie down, towing, suspension, lifting, and applications that involve side-loading circumstances.

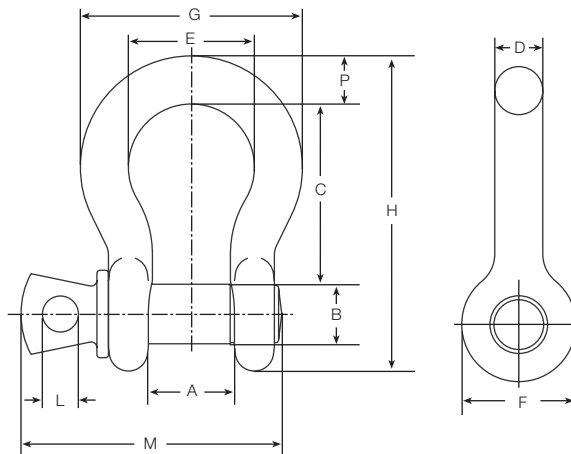
Crosby shackles are created with special attention to material selection, forging techniques, machining, and heat treatment processes to assure the properties required will be attained. All models are quenched and tempered to assure the uniformity of performance and maximize the properties of the steel. As a result, each shackle meets its rated strength and has required ductility, toughness, impact and fatigue properties essential to provide long-term performance in adverse conditions.

### Standard Features

- Meet performance requirements of Federal Specification RR-C-271D Type IVA, Grade B, Class 3, except for those provisions required of the contractor
- Meet DNV impact requirements of 42 joules at -6°F (-20°C)
- Working load limit permanently shown on every shackle
- Alloy bows, alloy bolts
- All sizes are individually proof tested to two times the working load limit
- Forged, quenched, and tempered alloy steel
- Pins are galvanized and painted red

# G-209 Screw Pin Anchor Shackle

## Specifications

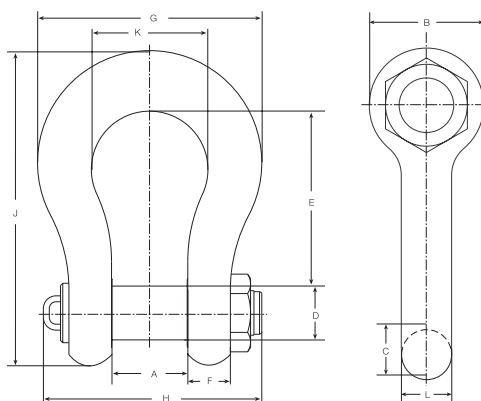


**SCREW PIN ANCHOR SHACKLE**

PART #	NOM. SIZE	WORKING LOAD LIMIT	A	B	C	D	E	F	G	H	L	M	N	P	TOLERANCE	
															C	A
70215	3/8"	4000 lb	0.66"	0.44"	1.44"	0.38"	1.03"	0.91"	1.78"	2.49"	0.25"	2.03"	1.86"	0.38"	0.13"	0.06"
70216	1/2"	6000 lb	0.81"	0.63"	1.88"	0.50"	1.31"	1.19"	2.31"	3.28"	0.38"	2.69"	2.38"	0.50"	0.13"	0.06"
70217	5/8"	10,000 lb	1.06"	0.75"	2.38"	0.63"	1.69"	1.50"	2.94"	4.19"	0.44"	3.34"	2.91"	0.69"	0.13"	0.06"
70218	3/4"	14,000 lb	1.25"	0.88"	2.81"	0.75"	2.00"	1.81"	3.50"	4.97"	0.50"	3.97"	3.44"	0.81"	0.25"	0.06"
70219	1"	25,000 lb	1.69"	1.13"	3.75"	1.00"	2.69"	2.38"	4.69"	6.56"	0.56"	5.07"	4.53"	1.06"	0.25"	0.06"
70220	1 1/8"	30,000 lb	1.81"	1.25"	4.25"	1.16"	2.91"	2.69"	5.16"	7.47"	0.63"	5.59"	5.13"	1.25"	0.25"	0.06"
70221	1 1/4"	36,000 lb	2.03"	1.38"	4.69"	1.29"	3.25"	3.00"	5.75"	8.25"	0.69"	6.16"	5.50"	1.38"	0.25"	0.06"
70222	1 3/8"	42,000 lb	2.25"	1.50"	5.25"	1.42"	3.63"	3.31"	6.38"	9.16"	0.75"	6.84"	6.13"	1.50"	0.25"	0.13"

# G-2140 Bolt Type Anchor Shackle

## Specifications



**BOLT TYPE ANCHOR SHACKLE**

PART #	NOM. SIZE	WORKING LOAD LIMIT	A	B	C	D	E	F	G	H	J	K	L	TOLERANCE	
														C	A
70223	1 1/2"	60,000 lb	2.38"	3.62"	1.62"	1.63"	5.75"	1.39"	6.88"	7.75"	10.00"	3.88"	1.54"	0.13"	0.25"
70224	1 3/4"	80,000 lb	2.88"	4.19"	2.25"	2.00"	7.00"	1.75"	8.86"	9.06"	23.34"	5.00"	1.84"	0.13"	0.25"
70225	2"	110,000 lb	3.25"	4.81"	2.40"	2.25"	7.75"	2.00"	9.97"	10.41"	13.68"	5.75"	2.08"	0.13"	0.25"
70226	2 1/2"	170,000 lb	4.12"	5.69"	3.12"	2.75"	10.50"	2.62"	12.87"	13.56"	17.84"	7.25"	2.71"	0.25"	0.25"