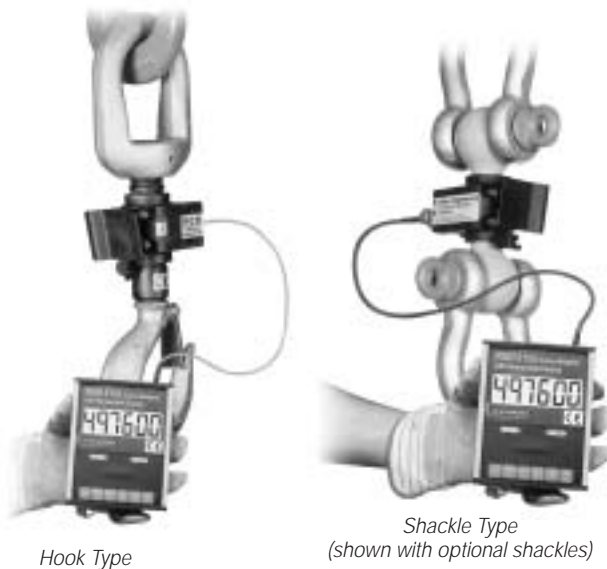


Eilon RON 2125 Hook Crane Scale/Shackle Dynamometer w/Detachable Indicator

NEW!
Product



Hook Type

Shackle Type
(shown with optional shackles)

(SEE CHART ON BACK OF PAGE FOR PART #'S)



Highly flexible, the RON 2125 crane scale/dynamometer is uniquely designed with a detachable indicator so operators can hold it in their hand to avoid safety hazards. Also attachable to the load cells, a large .75 inch LCD display shows up to six digits that are easy to read at a safe distance from the load. The system is powered by rechargeable batteries that provide up to 25 hours of continuous operation. In addition, automatic shutoff (after 1.5 hours) conserves power. The RON 2125 offers performance enhancing features such as pushbutton tare and peak hold for detecting maximum values. Options include an additional display, as well as analog output and RS-232 serial communication for transferring data to a data acquisition device or PC.

Enhancing reliability, the RON 2125's rugged design includes alloy steel load cells coated with polyurethane for extra endurance. In addition, they're compact for minimal headroom loss in any application. Each system is proof tested to 200%, and features a safety factor of 5:1, while a two-level overload warning further enhances safety. All units are factory calibrated and easily recalibrated by the user.

Ideal for crane or hoist applications up to 20,000 lbs, the RON 2125 is available with a variety of precision-crafted hooks that enable quick connection to the load. Choose shackles for lifting up to 600,000 lbs or measuring horizontal force in tie-down, towing, suspension or side-loading applications. Shackle versions are easily disassembled and transported in a specially fitted carrying case.

Applications

- Checking incoming raw materials from suppliers

Shackle Type

- Installing and testing antenna guy wires
- Lifting equipment proof tests (hoists, winches, etc.)
- Periodic testing of lifting cranes

Standard Features

- Miniature load cells guarantee portability and minimal headroom loss
- Two level overload warning
- User calibration
- Auto shut-off after 1.5 hours
- Operator keypad: PEAK HOLD, ENTER, ZERO, TARE, ESC, and ON/OFF
- Rechargeable batteries, up to 25 hours continuous use
- Low battery warning
- Liquid Crystal Display (LCD)

Shackle Type additional features:

- Special perpendicular hole structure ensures neutralization of external moments
- Carrying case

Options/Accessories

- RS-232 continuous output, 9600 baud, eight data bits, one stop bit, no parity (includes mating connector only, cable not included)
- Load cell with underwater capability (2' max. depth)
- Two user-adjustable setpoints
- User-adjustable auto shut-off (60-5900 seconds)
- User-selectable baud rate (1200-9600)
- User-selectable units of measure (lb, metric tons, short tons, and kilo-newtons)
- 4-20 mA analog output
- Low temperature -13°F (-25°C)
- High temperature 175°F (80°C)
- Additional remote display with cable or wireless connection: 1.6" (40mm) Liquid Crystal Display (LCD)

NOTE: All options/accessories must be installed at time of order.

SAFETY FACTOR:

Hook Type: 5:1 for load cell, 5:1 for the lifting eye. Average straightening load of the hook is at least 4 times the capacity
Shackle Type: 5:1 for load cell

PROOF LOAD:

Each system tested to 200% (certified)

ACCURACY:

± 0.1% of full range

ENCLOSURE:

Robust extruded aluminum housing. Iridized and polyurethane coated

INDICATOR DISPLAY:

See chart below for display sizes

Liquid Crystal Display (LCD) and annunciators: two level overload warning, max. value (peak hold), low battery, and tare state

UNITS:

lb (consult factory to order a scale configured/defaulted for other units of measurement)

LOAD CELL:

High strength, aerospace quality, alloy steel, polyurethane coated

Hook and lifting eye are Crosby-Laughlin or equivalent

POWER:

Rechargeable batteries provide power for up to 25 hours continuous use. All data settings are retained at power off

CALIBRATION:

Factory calibrated, fully traceable (certificated)

TEMPERATURE RANGE:

14°F to 140°F (-10°C to 60°C)

ENVIRONMENTAL:

Weatherproof, NEMA 4, IP65

APPROVALS:

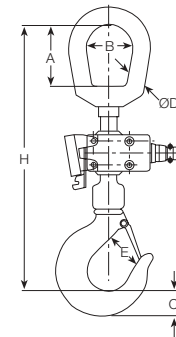
CE marked

WARRANTY:

One year limited warranty

RON 2125 HOOK TYPE

PART #	CAPACITY	A	B	C	D Ø	E	H
Four-digit, 1.0" (25mm) Indicator Display							
68364.....	500 lb x 0.2 lb.....	2.0"	1.5"	0.875"	0.5"	1.0"	10.0"
68366.....	2000 lb x 1.0 lb.....	2.0"	1.5"	0.875"	0.5"	1.0"	10.0"
68367.....	2500 lb x 1.0 lb.....	2.0"	1.5"	0.875"	0.5"	1.0"	10.0"
68368.....	3200 lb x 1.0 lb.....	2.0"	1.5"	0.875"	0.5"	1.0"	10.0"
68369.....	5000 lb x 2.0 lb.....	2.625"	2.0"	1.125"	0.75"	1.125"	11.5"
68370.....	6000 lb x 2.0 lb.....	2.625"	2.0"	1.125"	0.75"	1.125"	11.5"
68371.....	6400 lb x 2.0 lb.....	2.625"	2.0"	1.125"	0.75"	1.125"	11.5"
Six-digit, 0.75" (19mm) Indicator Display							
68365.....	1000 lb x 0.5 lb.....	2.0"	1.5"	0.875"	0.5"	1.0"	10.0"
68372.....	10,000 lb x 5.0 lb.....	3.5"	2.5"	1.5"	1.0"	1.4375"	13.0"
68373.....	20,000 lb x 10.0 lb.....	4.0"	3.125"	2.25"	1.25"	2.25"	19.0"

**RON 2125 SHACKLE TYPE (SHACKLES NOT INCLUDED - refer to catalog page CS-9)**

PART #	CAPACITY	LOAD CELL WEIGHT	ELEC. LEAD LENGTH	H1 MAX.	H2 MAX.	B MAX.	D1 MAX.	D2 MIN.	ANCHOR/SHACKLE
Four-digit, 1.0" (25mm) Indicator Display									
69678.....	500 lb x 0.2 lb.....	0.7 lb (0.3 kg)	16'	4.8"	3.7"	0.7"	1.2"	0.66"	1/2", 7/16", 3/8"
69680.....	2000 lb x 1.0 lb.....	0.7 lb (0.3 kg)	16'	4.8"	3.7"	0.7"	1.2"	0.66"	1/2", 7/16", 3/8"
69681.....	4000 lb x 2.0 lb.....	0.7 lb (0.3 kg)	16'	4.8"	3.7"	0.7"	1.2"	0.66"	1/2", 7/16", 3/8"
69682.....	6000 lb x 2.0 lb.....	0.7 lb (0.3 kg)	16'	5.4"	4.0"	0.75"	1.5"	0.82"	5/8", 1/2"
Six-digit, 0.75" (19mm) Indicator Display									
69679.....	1000 lb x 0.5 lb.....	0.7 lb (0.3 kg)	16'	4.8"	3.7"	0.7"	1.2"	0.66"	1/2", 7/16", 3/8"
69683.....	10,000 lb x 5.0 lb.....	1 lb (0.4 kg)	16'	5.7"	4.2"	1.0"	1.75"	0.9"	3/4", 5/8"
69684.....	20,000 lb x 10.0 lb.....	2.7 lb (1.2 kg)	16'	7.7"	5.3"	1.6"	2.4"	1.4"	1 1/4", 1 1/8", 1"
69685.....	25,000 lb x 20.0 lb.....	2.7 lb (1.2 kg)	16'	7.7"	5.3"	1.6"	2.4"	1.4"	1 1/4", 1 1/8", 1"
69686.....	30,000 lb x 20.0 lb.....	5 lb (2.3 kg)	32'	8.1"	5.3"	1.8"	2.8"	1.4"	1 1/4", 1 1/8"
69687.....	40,000 lb x 20.0 lb.....	5.5 lb (2.5 kg)	32'	8.7"	5.6"	2.1"	3.2"	1.55"	1 3/8"
69688.....	50,000 lb x 20.0 lb.....	7.3 lb (3.3 kg)	32'	9.2"	5.9"	2.3"	3.4"	1.7"	1 1/2"
69689.....	60,000 lb x 20.0 lb.....	7.3 lb (3.3 kg)	32'	9.2"	5.9"	2.3"	3.4"	1.7"	1 1/2"
69690.....	80,000 lb x 50.0 lb.....	16 lb (7.3 kg)	49'	11.8"	7.6"	2.8"	4.5"	2.3"	2", 1 3/4"
69691.....	100,000 lb x 50.0 lb.....	16 lb (7.3 kg)	49'	11.8"	7.6"	2.8"	4.5"	2.3"	2", 1 3/4"
69692.....	160,000 lb x 100.0 lb.....	36 lb (16 kg)	65'	15.8"	10.4"	3.8"	5.7"	3.0"	2 1/2"
69693.....	250,000 lb x 200.0 lb.....	66 lb (30 kg)	81'	18.0"	11.8"	4.8"	6.5"	3.18"	Crosby #2160, 125t
69694.....	400,000 lb x 200.0 lb.....	121 lb (55 kg)	98'	22.8"	15.0"	5.7"	8.3"	4.2"	Crosby #2160, 200t
69695.....	500,000 lb x 200.0 lb.....	227 lb (103 kg)	98'	31.3"	19.7"	7.0"	10.0"	5.2"	Crosby #2140, 250t or #2160, 300t
69696.....	600,000 lb x 200.0 lb.....	227 lb (103 kg)	98'	31.3"	19.7"	7.0"	10.0"	5.2"	Crosby #2160, 300t

