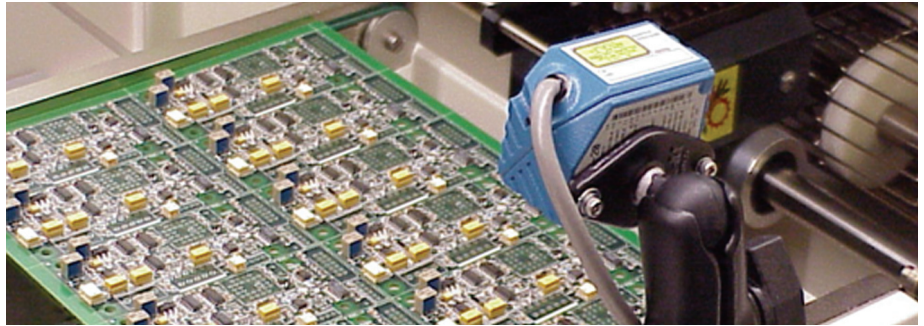
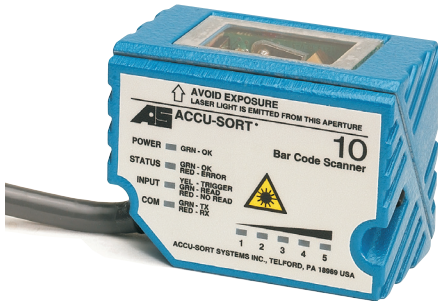


ACCU-SORT®

Model 10



300 scans per second

"Scanning Efficiency" LED bar graph displays scanner performance

Accu-Setup for Small Scanners Windows®-based configuration software helps get your scanner on line in a hurry

Stainless steel mounting brackets and conversion kits for competitive products

Accu-Sort's low cost scanning solution for embedded and material handling applications...

Big performance. Small footprint.

The Model 10, another high performance Accu-Sort line scanner, combines impressive optical performance with useful electrical features in a compact, rugged housing. With its advanced optical design, the Model 10 can handle almost any line scanning application. A wide scan angle coupled with powerful A/D circuitry provides an extremely large performance envelope for any given bar code.

The Model 10's rugged, IP65-rated die cast zinc enclosure, small size, zero clearance cable exit, and versatile mounting brackets combine to make installation a breeze.

Configuring the Model 10 is a snap using our Accu-Setup for Small Scanners software. This Windows®-based software package gets you up and running faster than ever by simplifying the process of defining and modifying operating parameter.

The Model 10 has a flexible design for integration into a wide range of systems. Simplified connections allow the Model 10 to install into existing environments with minimal changes.

Two solid-state current limited internal relays are included for good-read/no-read or custom outputs. A "scanning efficiency" LED bar graph provides at-a-glance checks on the status of the unit.

Other useful features include: status indicator LEDs, fault-tolerant inputs and outputs, and a functional block diagram on the bottom of the unit for easy installation.

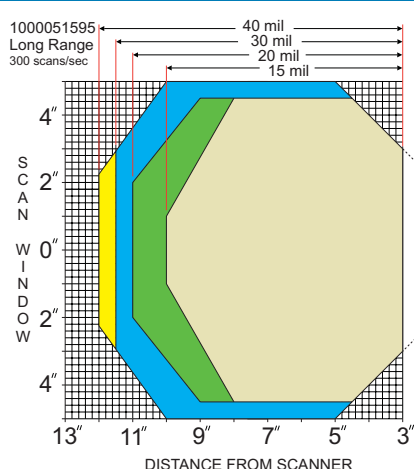
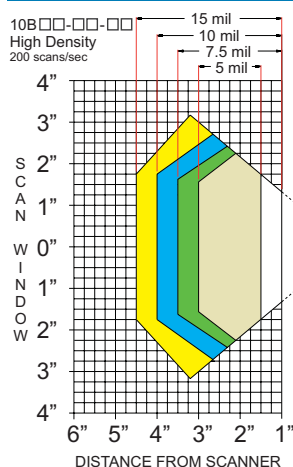
Options: raster mirror wheels, an external relay box with industry-standard I/O modules, and a remote display.

Typical applications include:

- Automated document handling
- Pharmaceutical bar code and label verification
- Data cassette retrieval systems
- Medical specimen tracking
- Small electronics/printed circuit board tracking

Evaluation kits are available. Call 1-800-BAR-CODE™ for more information.

Model 10 Laser Bar Code Reader



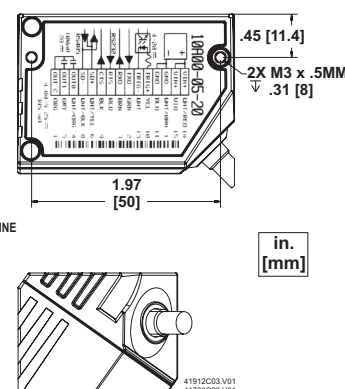
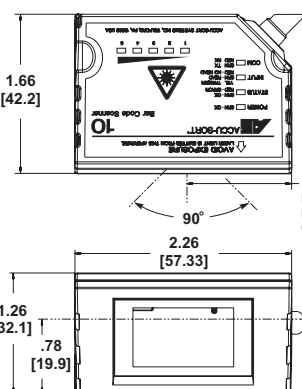
LASER LIGHT
DO NOT STARE INTO BEAM
CLASS 2 LASER PRODUCT (IEC.)
2.0mW PEAK AT 650nm.
COMPLIES TO:
EN 60825-1: 1994-21CFR1040



S/N: 01034466
MANUFACTURED: SEPTEMBER 2001

LASER LIGHT
AVOID DIRECT EYE EXPOSURE
CLASS 3R LASER PRODUCT (IEC)
EN 60825-1: 1993+A1: 1997+A2: 2001
≤5.0 mW PEAK @ 630-700 nm

Narrow Element Width	Reading Range	Depth of Field	Maximum Scan Window
10.0 mil [0.25mm]	2.5"-5.0" [63.5-127mm]	2.5" [63.5mm]	5.0" [127mm] @ 2.8" [71mm]
15.0 mil [0.38mm]	1.0"-7.0" [25.4-178mm]	6.0" [152mm]	8.0" [203mm] @ 4.6" [116mm]
20.0 mil [0.50mm]	1.0"-8.0" [25.4-203mm]	7.0" [178mm]	8.0" [203mm] @ 4.6" [116mm]
25.0 mil [0.88mm]	1.0"-8.25" [25.4-210mm]	7.25" [184mm]	8.0" [203mm] @ 4.6" [116mm]
5.0 mil [.13mm]	1.5"-3.0" [38.1-76.2mm]	1.5" [38.1mm]	3.90" [99mm] @ 2.10" [53mm]
7.5 mil [.19mm]	1.0"-3.5" [25.4-88.9mm]	2.5" [63.5mm]	4.25" [107mm] @ 2.37" [60mm]
10.0 mil [.25mm]	1.0"-4.0" [25.4-101.6mm]	3.0" [76.2mm]	4.80" [122mm] @ 2.60" [66mm]
15.0 mil [.38mm]	1.0"-4.5" [25.4-114.3mm]	3.5" [88.9mm]	5.60" [142mm] @ 3.30" [84mm]



Specifications

Characteristic	Description
Name	Bar Code Laser Scanner, Model 10
Depth of Field	See read chart
Scan Rate	Standard: 300 scans per second High Density: 200 scans per second Long Range: 300 scans per second High Speed: 500 scans per second
Temperature	Operating: +32° to +122° F [0° to +50° C] Storage: -4° to +158° F [-20° to +70° C]
Relative Humidity	10% - 90% non-condensing
Laser Type	Visible laser diode 650 nm (standard)
Operating Voltage	5 VDC @ 500 mA
Visual Diagnostics	Power, transmit/receive, Status, Trigger/GO/NVC, five segment LED bar graph
Bar Code Types	All standard 1D symbologies
Connectors	Flying leads, 15-pin high density, EM-50 connection
Weight	0.40 lbs [0.18 kg]
Size	L 1.7" [43 mm] x W 2.3" [58 mm] x H 1.3" [33 mm]
Enclosure	IP65 rated
Warranty	1-year limited, parts and labor
Service Options	Installation assistance and on-site training
Compliance	CE, UL, cUL, CDRH 21 CFR 1040 Class II

*Actual performance may vary with configuration and application.



For more information about auto-ID and material handling solutions from Accu-Sort Systems, contact us at:

ACCUSORT® SYSTEMS, INC.
511 School House Road
Telford, PA 18969
1-800-BAR-CODE™

info@accusort.com
www.accusort.com

©2001-2006 Accu-Sort Systems, Inc. All rights reserved. The AS logotype, ACCU-SORT, and 1-800-BAR-CODE are trademarks or registered trademarks of Accu-Sort Systems, Inc.

Accu-Sort reserves the right to change specifications without notice.